

Laboratory Reggio Emilia
Quality System certified according to ISO 9001:2008

Customer:

CSA Srl
Strada S. Giuseppe 15
43039 Salsomaggiore Terme PR

Collected by: Customer
Samples received by: LIAG Staff
Beginning of the tests: 20/06/2016

Delivered to the laboratory by: Carrier
Received by the laboratory on: 20/06/2016
End date of analysis: 24/06/2016

Sampled by the customer and under his responsibility

Certificate of analysis n° RE3744 issued on 01/07/2016

Sample identification: 2016RE14430
Sample description: Automatic control valve XLC 400 and 300 series

Sampled on: 17/03/2016

Sample type: Material

Parameters	Unit of measurement	Results	Maximum value	Mehod
Overall migration test	mg/kg H2O	35	50	DM 06/04/2004 n. 174

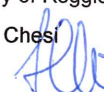
Maximum value according to the D.M. issued on 06/04/2004, n. 174, published in GU on 17/07/2004 n. 166.

DECLARATION OF CONFORMITY

According to the test results we hereby declare that the material complies with the requirements of Annex III (plastics, natural and synthetic gums) DM 06/04/2004 n. 174 "Regulation on materials and objects that can be used in fixed water collection points, treatment, adduction and distribution of waters intended for human consumption".

Head of the Laboratory of Reggio Emilia

Dr. Laura Chesi

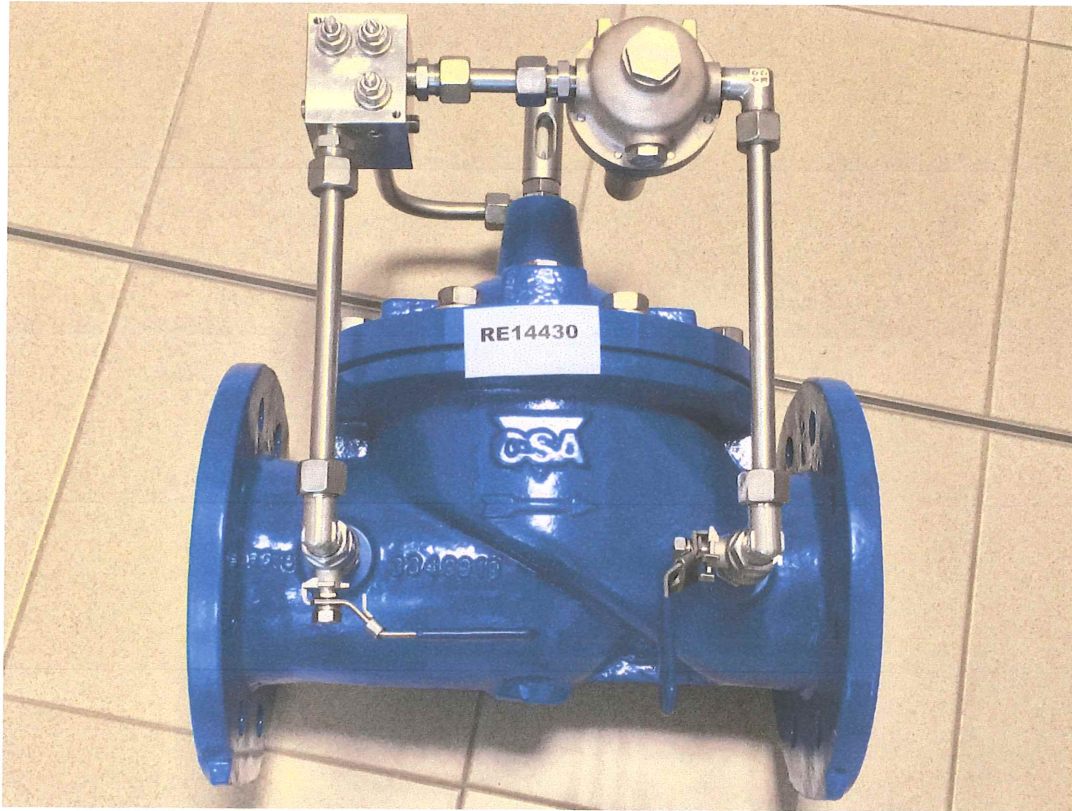


This document exclusively refers to the samples tested and may not be reproduced without the written approval of the Laboratory

End of the Certificate of Analysis

Page 1/1

Annexed to the certificate of analysis n. RE3744 issued on 01/07/2016



Laboratory Reggio Emilia

Quality System certified according to ISO 9001:2008

Customer:

CSA Srl
Strada S. Giuseppe 15
43039 Salsomaggiore Terme PR

Collected by: Customer
 Samples received by: LIAG Staff
 Beginning of the tests: 20/06/2016

Delivered to the laboratory by: Carrier
 Received by the laboratory on: 20/06/2016
 End date of analysis: 24/06/2016

Sampled by the customer and under his responsibility

Certificate of analysis n° RE3743 issued on 01/07/2016

Sample identification: 2016RE14429

Sample description: Direct acting pressure reducing valve VRCD and pressure sustaining valve VSM

Sampled on: 17/03/2016

Sample type: Material

Parameters	Unit of measurement	Results	Maximum value	Mehod
Overall migration test	mg/kg H2O	25	50	DM 06/04/2004 n. 174

Maximum value according to the D.M. issued on 06/04/2004, n. 174, published in GU on 17/07/2004 n. 166.

DECLARATION OF CONFORMITY

According to the test results we hereby declare that the material complies with the requirements of Annex III (plastics, natural and synthetic gums) DM 06/04/2004 n. 174 "Regulation on materials and objects that can be used in fixed water collection points, treatment, adduction and distribution of waters intended for human consumption".

Head of the Laboratory of Reggio Emilia

Dr. Laura Chesi



This document exclusively refers to the samples tested and may not be reproduced without the written approval of the Laboratory

End of the Certificate of Analysis

Annexed to the certificate of analysis n. RE3743 issued on 01/07/2016



Laboratory Reggio Emilia

Quality System certified according to ISO 9001:2008

Customer:

CSA Srl
Strada S. Giuseppe 15
43039 Salsomaggiore Terme PR

Collected by: Customer
Samples received by: LIAG Staff
Beginning of the tests: 23/03/2016

Delivered to the laboratory by: Carrier
Received by the laboratory on: 23/03/2016
End date of analysis: 30/03/2016

Sampled by the customer and under his responsibility

Certificate of analysis n° RE1971 issued on 31/03/2016

Sample identification: 2015907001

Sample description: AIR VALVES FOX SERIES

Sampled on: 17/03/2016

Sample type: Material

Parameters	Unit of measurement	Results	Maximum value	Mehod
Overall migration test	mg/kg H2O	24	50	DM 06/04/2004 n. 174

Maximum value according to the D.M. issued on 06/04/2004, n. 174, published in GU on 17/07/2004 n. 166.

DECLARATION OF CONFORMITY

According to the test results we hereby declare that the material complies with the requirements of Annex III (plastics, natural and synthetic gums) DM 06/04/2004 n. 174 "Regulation on materials and objects that can be used in fixed water collection points, treatment, adduction and distribution of waters intended for human consumption".

Head of the Laboratory of Reggio Emilia

Dr. Laura Chesi



This document exclusively refers to the samples tested and may not be reproduced without the written approval of the Laboratory

End of the Certificate of Analysis

Page 1/1

Annexed to the certificate of analysis n. RE1971 issued on 31/03/2016



Laboratory Reggio Emilia

Quality System certified according to ISO 9001:2008

Customer:

CSA Srl
Strada S. Giuseppe 15
43039 Salsomaggiore Terme PR

Collected by: Customer
Samples received by: LIAG Staff
Beginning of the tests: 23/03/2016

Delivered to the laboratory by: Carrier
Received by the laboratory on: 23/03/2016
End date of analysis: 30/03/2016

Sampled by the customer and under his responsibility

Certificate of analysis n° RE1972 issued on 31/03/2016

Sample identification: 2015907002

Sample description: AIR VALVES LYNX SERIES

Sampled on: 17/03/2016

Sample type: Material

Parameters	Unit of measurement	Results	Maximum value	Mehod
Overall migration test	mg/kg H2O	28	50	DM 06/04/2004 n. 174

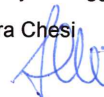
Maximum value according to the D.M. issued on 06/04/2004, n. 174, published in GU on 17/07/2004 n. 166.

DECLARATION OF CONFORMITY

According to the test results we hereby declare that the material complies with the requirements of Annex III (plastics, natural and synthetic gums) DM 06/04/2004 n. 174 "Regulation on materials and objects that can be used in fixed water collection points, treatment, adduction and distribution of waters intended for human consumption".

Head of the Laboratory of Reggio Emilia

Dr. Laura Chesì



This document exclusively refers to the samples tested and may not be reproduced without the written approval of the Laboratory

End of the Certificate of Analysis

Page 1/1

Annexed to the certificate of analysis n. RE1972 issued on 31/03/2016



Laboratory Reggio Emilia

Quality System certified according to ISO 9001:2008

Customer:

CSA Srl
Strada S. Giuseppe 15
43039 Salsomaggiore Terme PR

Collected by: Customer
 Samples received by: LIAG Staff
 Beginning of the tests: 20/06/2016

Delivered to the laboratory by: Carrier
 Received by the laboratory on: 20/06/2016
 End date of analysis: 24/06/2016

Sampled by the customer and under his responsibility

Certificate of analysis n° RE3740 issued on 01/07/2016

Sample identification: 2016RE14426

Sample description: Float valve ATHENA

Sampled on: 17/03/2016

Sample type: Material

Parameters	Unit of measurement	Results	Maximum value	Mehod
Overall migration test	mg/kg H2O	30	50	DM 06/04/2004 n. 174

Maximum value according to the D.M. issued on 06/04/2004, n. 174, published in GU on 17/07/2004 n. 166.

Sample identification: 2016RE14427

Sample description: Lever for float valve ATHENA

Sampled on: 17/03/2016

Sample type: Material

Parameters	Unit of measurement	Results	Maximum value	Mehod
Overall migration test	mg/kg H2O	5.0	50	DM 06/04/2004 n. 174

Maximum value according to the D.M. issued on 06/04/2004, n. 174, published in GU on 17/07/2004 n. 166.

Sample identification: 2016RE14428

Sample description: Float for ATHENA valves

Sampled on: 17/03/2016

Sample type: Material

Parameters	Unit of measurement	Results	Maximum value	Mehod
Overall migration test	mg/kg H2O	5.0	50	DM 06/04/2004 n. 174

Maximum value according to the D.M. issued on 06/04/2004, n. 174, published in GU on 17/07/2004 n. 166.

DECLARATION OF CONFORMITY

According to the test results we hereby declare that the material complies with the requirements of Annex III (plastics, natural and synthetic gums) DM 06/04/2004 n. 174 "Regulation on materials and objects that can be used in fixed water collection points, treatment, adduction and distribution of waters intended for human consumption".

Head of the Laboratory of Reggio Emilia

Dr. Laura Chesi

This document exclusively refers to the samples tested and may not be reproduced without the written approval of the Laboratory

End of the Certificate of Analysis

Annexed to the certificate of analysis n. RE3740 issued on 01/07/2016

